

HAMMOND LAND SURVEYING, INC.

MAILING: P.O. BOX 471  
LARAMIE, WYOMING 82073

February 24, 2026

**Easement Dedication**

The City of Laramie, Wyoming, a municipal corporation, being the owner of real estate in Section 2, Township 15, Range 73 West, of the 6th P.M., City of Laramie, Albany County, Wyoming, does hereby dedicate a permanent 10-foot-wide public utility easement described as follows:

COMMENCING AT THE SOUTHEAST CORNER OF LOT 1 OF SAID SECTION 2, BEING ON THE NORTH LINE OF THE FORMER FORT SANDERS MILITARY RESERVATION, WHICH IS MONUMENTED BY A 3-1/4" BRASS CAP SET BY PLS 2927. WHENCE THE EAST ¼ CORNER OF SAID SECTION BEARS N 00° 13' 45" E, A DISTANCE OF 1634.85 FEET; THENCE N 89° 44' 08" W, A DISTANCE OF A 1957.46 FEET, TO THE SOUTHWEST CORNER OF "TRACT E" ON THE GRAND VIEW HEIGHTS 7<sup>TH</sup> FILING FINAL PLAT RECORDED AT THE ALBANY COUNTY CLERK'S OFFICE TO THE POINT OF BEGINNING OF THE FOLLOWING 10 FOOT WIDE UTILITY EASEMENT. SAID SOUTHWEST CORNER IS MONUMENTED BY A 1-1/2" ALUMINUM CAP SET BY PLS 5910;

THENCE N 00° 01' 28" E, A DISTANCE OF 423.36 FEET ALONG THE WEST LINE OF SAID TRACT E TO A POINT MONUMENTED BY A 1-1/2" ALUMINUM CAP SET BY PLS 5910;

THENCE S 89° 58' 32" E, A DISTANCE OF 10.00 TO A POINT;

THENCE S 00° 01' 28" W, A DISTANCE OF 423.40 TO A POINT ON THE NORTH LINE OF THE FORMER FORT SANDERS MILITARY RESERVATION;

THENCE N 89° 44' 08" W, A DISTANCE OF 10.00 ALONG THE NORTH LINE OF THE FORMER FORT SANDERS MILITARY RESERVATION TO THE POINT OF BEGINNING;

THE AREA OF THE ABOVE EASEMENT IS 0.10 ACRES, MORE LESS;

THE BEARINGS ARE REFERENCED TO THE NORTH LINE OF THE FORMER FORT SANDERS MILITARY RESERVATION AS BEARING N 89° 44' 08" W;

The mailing address is City of Laramie, PO Box C, Laramie, Wyoming 82073.

Said property is represented by the attached Exhibit "A" attached hereto and incorporated herein by reference.

\_\_\_\_\_  
Sharon Cumbie, Mayor and President of the  
City Council  
ATTEST: \_\_\_\_\_ Date

\_\_\_\_\_  
Nancy Bartholomew, CMC  
City Clerk  
Date

ACKNOWLEDGEMENT

STATE OF WYOMING )  
 ) SS  
COUNTY OF ALBANY )

The foregoing instrument, Easement of Dedication was acknowledged before me by Sharon Cumbie, Mayor and President of the City Council and Nancy Bartholomew, City Clerk of the City of Laramie, Wyoming, this \_\_\_\_\_ day of \_\_\_\_\_, 2026

Witness my hand and official seal

\_\_\_\_\_  
Notary Public  
My Commission expires \_\_\_\_\_



# EXHIBIT "A"

A TRACT OF LAND IN  
THE S 1/2, SEC. 2, T15N,  
R73W, 6TH P.M.,  
ALBANY COUNTY,  
WYOMING

DOC# 2024-4548

1 1/2" ALUMINUM CAP  
"SSS P.L.S. 5910"

10.00'

S89°58'32"E  
110.00'

1 1/2" ALUMINUM CAP  
"SSS P.L.S. 5910"

N00°01'28"W 150.00'

E 1/4  
SECTION 2

2 1/4" ALUMINUM CAP  
"LS 11484"

N00°13'45"W 1,634.85'

10-FT UTILITY EASEMENT

N00°01'28"E 423.36'  
S00°01'28"W 423.40'

DOC# 2006-2546

TRACT E  
DOC# 2020-5747

POINT OF  
BEGINNING

1 1/2" ALUMINUM CAP  
"SSS P.L.S. 5910"

N89°44'08"W 939.58'  
N89°44'08"W 1,957.46'

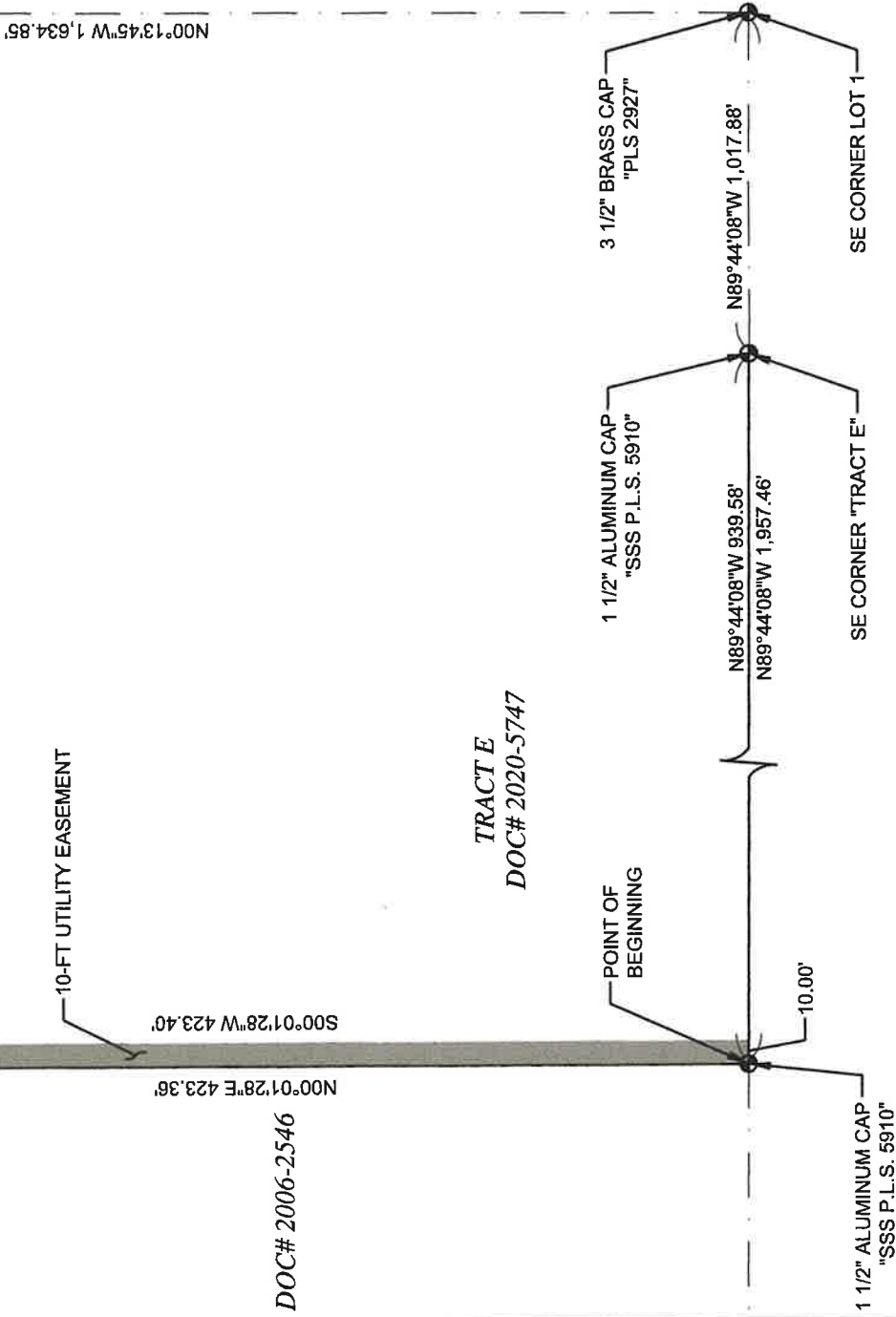
10.00'

1 1/2" ALUMINUM CAP  
"SSS P.L.S. 5910"

3 1/2" BRASS CAP  
"PLS 2927"

N89°44'08"W 1,017.88'

SE CORNER LOT 1



### LEGEND

- FOUND MONUMENT, AS NOTED
- SECTION LINE
- TRACT "E" BOUNDARY

### CERTIFICATE OF SURVEYOR

I, DAVID G. HAMMOND, OF LARAMIE, WYOMING DO HEREBY CERTIFY THAT THIS DRAWING REPRESENTS THE LOCATION OF THE PROPOSED UTILITY EASEMENT TO MY BEST KNOWLEDGE, INFORMATION, AND BELIEF.



HAMMOND LAND SURVEYING, INC.

P.O. BOX 471  
LARAMIE, WY 82073  
(307) 460-1441

ROTARY PARK  
UTILITY EASEMENT

DRAWN BY:	PC
CHECKED BY:	DH
DATE:	02/11/2026
SCALE:	1"=75'
REVISED:	