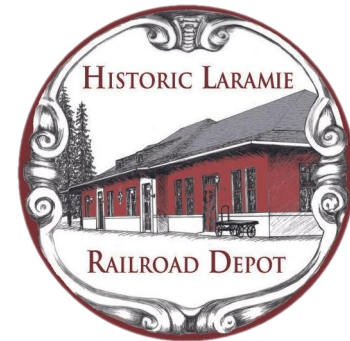


Bring the Laramie Engine Terminal Home



Laramie
WYOMING

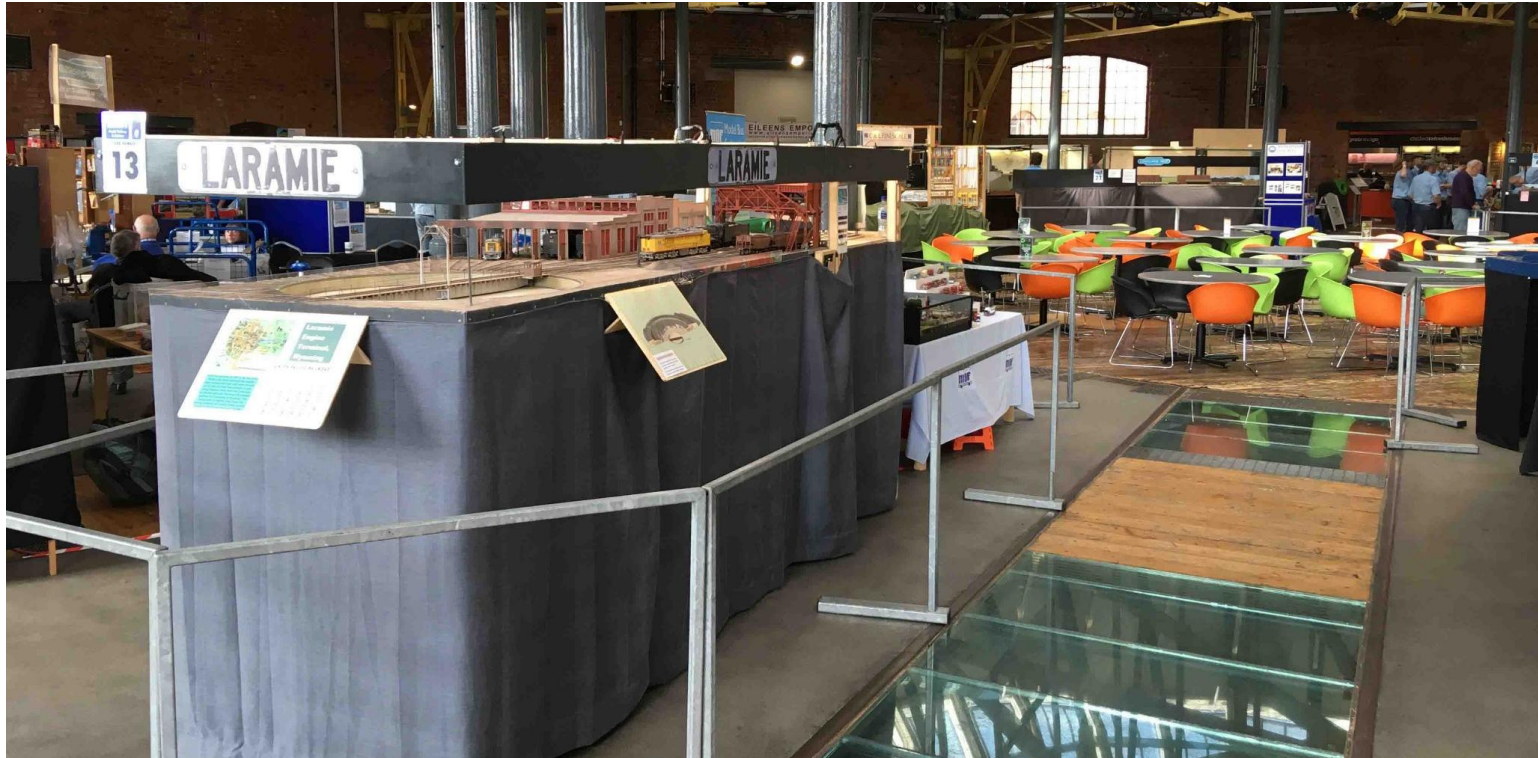


What is it?



A museum-quality model railway that was built in the United Kingdom, that depicts Laramie's historic steam engine terminal from the 1940s .

Why This Matters



The display tells Laramie's story visually, connecting generations and engaging visitors of all ages.

The Craftsmanship



Over 2,000 hours of work that is hand-built, historically accurate, and recognized internationally.

Meet the UK Team



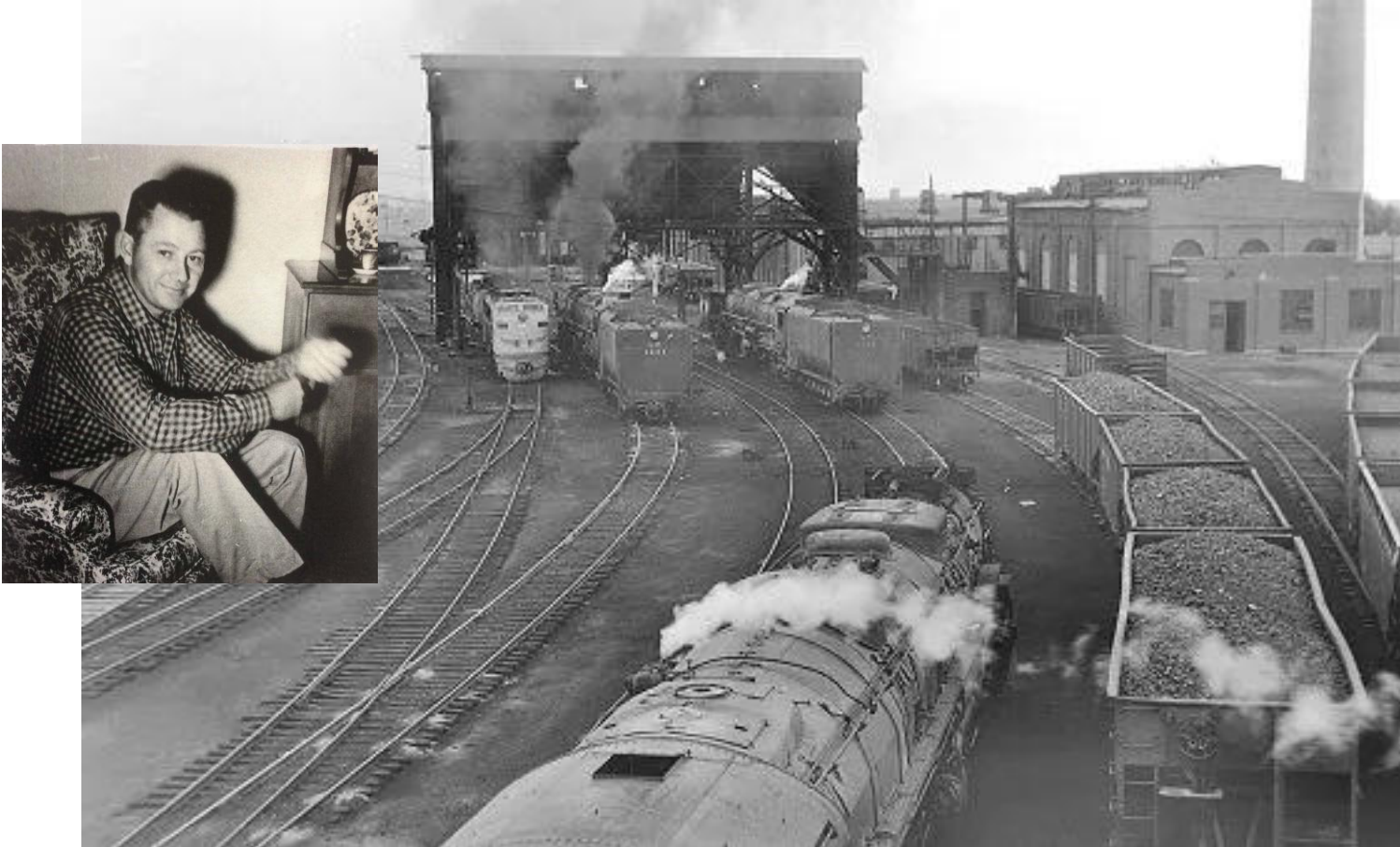
The artist/donor and the Laramie connection: Peter and Frances. The exhibit has been showcased at 30+ museums across the UK.

Why The City & Depot Should Act



It was built to tell Laramie's story - Inspired by real people - A once-in-a-lifetime opportunity to bring it home

An Amazing Back Story



This may have never happened without a direct Laramie connection with the United Kingdom.

An Opportunity for all of Larmie



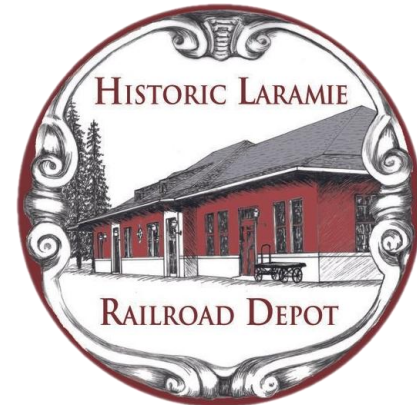
Unique regional attraction - Increase Depot visitation - Boost downtown activity - Educational programming potential

Who We Have Partnered With



We have partnered with local businesses to provide adequate insurance for the \$250,000+ appraised value and enhanced security for the Depot.

What We Need



We need further City partnership to support with transport and logistics to help bring this exhibit to its new home in Laramie