

---

**MINUTES**  
**Monolith Ranch Advisory Committee**  
**April 11, 2019 1:00 PM**  
**Tour of Baer Livestock Operations**

---

Members Present: Marius Favret, Amy Nagler, Jason Sherwood  
Members Absent: Paul Weaver, Carol Frost, Keith Rittle, Tony Hoch  
Staff Present: Karen Tangeman, Darren Parkin  
Guests Present: Zach Iddings – Baer Livestock

There was not a quorum in attendance. No Motions or decisions were made.

**MONOLITH RANCH TOUR OF BAER LIVESTOCK OPERATIONS**

- Substation
- Rebuilt Shipping & Receiving Corral
- Feed Lots and Cistern
- Hunziker Buildings
- Look at June 1 or 8 to Schedule Bird Count

No audio recording is available for this tour.

VALIDATED:

---

Marius Favret, Monolith Ranch Advisory Committee Chair Date

---

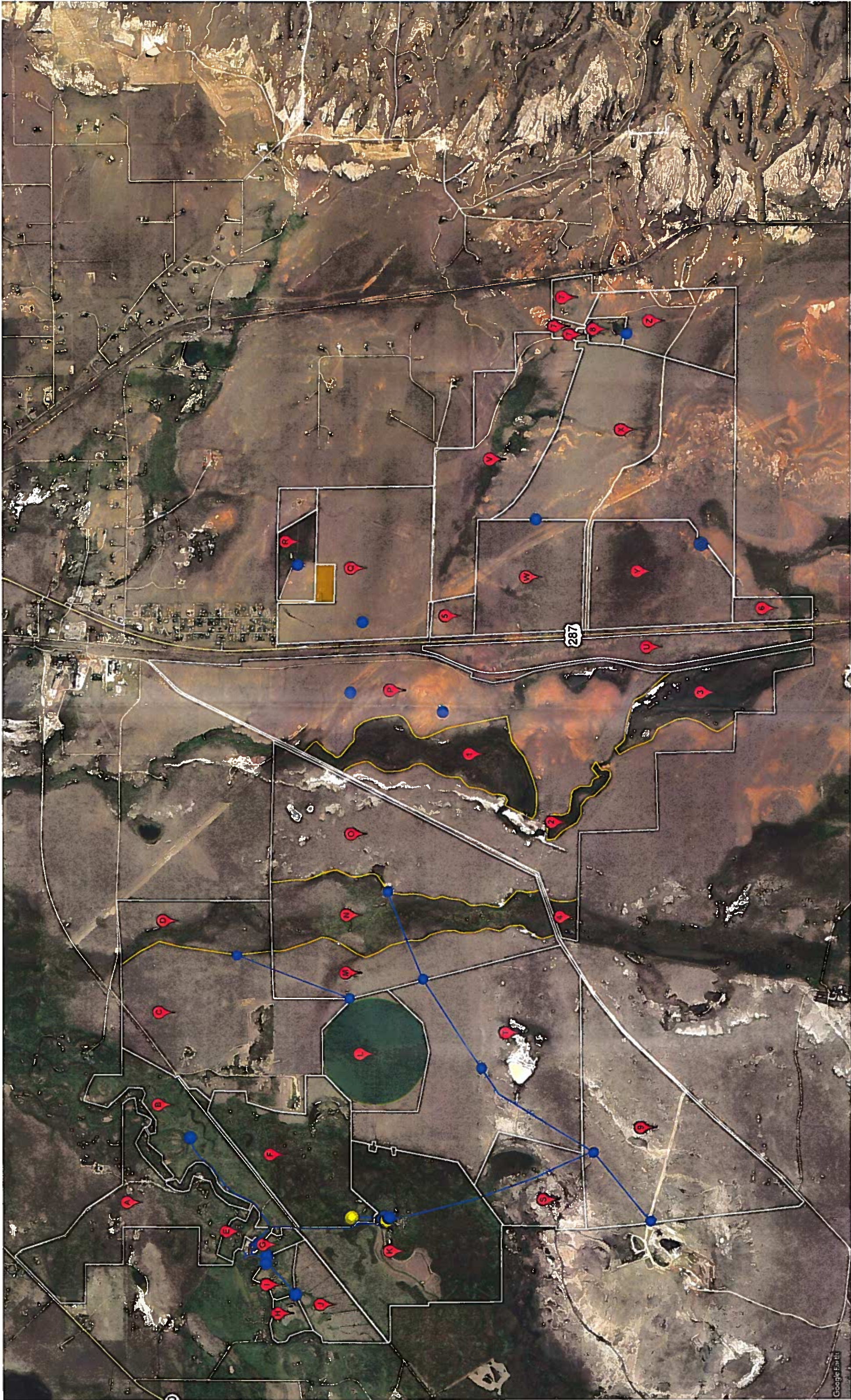
Cindy Williams, Monolith Ranch Advisory Committee Staff Liaison Date

The signed document is on file.

**Monolith Ranch Pastures:**

"A"	Pioneer Pasture	370 Acres	"R"	Hunziker Meadow	84 Acres
"B"	Road Meadow	289 Acres	"S"	Swamp Pasture	224 Acres
"C"	Quarry Pasture	696 Acres	"T"	Cactus Pasture	898 Acres
"D"	Quarry Meadow	215 Acres	"U"	Railroad Pasture	240 Acres
"E"	HQ Horse Pasture	36 Acres	"V"	Twin Lakes Pasture	516 Acres
"F"	Titus Meadow	384 Acres	"W"	North Bio Pasture	330 Acres
"G"	Triangle Pasture	21 Acres	"X"	Simpson Rangeland	875 Acres
"H"	Corner Meadow	36 Acres	"Y"	South Bio Pasture	372 Acres
"I"	Middle Meadow	41 Acres	"Z"	Thompson Pasture	235 Acres
"J"	Flat Ground Meadow	127 Acres	"1"	North Goforth Electric	282 Acres
"K"	Big Meadow	623 Acres	"2"	Middle Goforth Electric	34 Acres
"L"	Pivot (Irrigated)	265 Acres	"3"	South Goforth Electric	234 Acres
"M"	Savory - West	314 Acres	"4"	West Goforth Electric	24 Acres
"N"	Savory - Middle	386 Acres	"5"	Spring Lakes Trap	45 Acres
"O"	Savory - East	569 Acres	"6"	South Bio Creek Pasture	52 Acres
"P"	Goforth Upland	1 480 Acres	"7"	Simpson Horse Pastures	63 Acres
"Q"	Hunziker Rangeland + Hunziker Pond	502 Acres 34 Acres	"8"	Simpson Pond	27 Acres
			"9"	Mtn Cement's Pasture	722 Acres







**Monolith Ranch Pastures:**

"A"	Pioneer Pasture	370 Acres	"R"	Hunziker Meadow	84 Acres
"B"	Road Meadow	289 Acres	"S"	Swamp Pasture	224 Acres
"C"	Quarry Pasture	696 Acres	"T"	Cactus Pasture	898 Acres
"D"	Quarry Meadow	215 Acres	"U"	Railroad Pasture	240 Acres
"E"	HQ Horse Pasture	36 Acres	"V"	Twin Lakes Pasture	516 Acres
"F"	Titus Meadow	384 Acres	"W"	North Bio Pasture	330 Acres
"G"	Triangle Pasture	21 Acres	"X"	Simpson Rangeland	875 Acres
"H"	Corner Meadow	36 Acres	"Y"	South Bio Pasture	372 Acres
"I"	Middle Meadow	41 Acres	"Z"	Thompson Pasture	235 Acres
"J"	Flat Ground Meadow	127 Acres	"1"	North Goforth Electric	282 Acres
"K"	Big Meadow	623 Acres	"2"	Middle Goforth Electric	34 Acres
"L"	Pivot (Irrigated)	265 Acres	"3"	South Goforth Electric	234 Acres
"M"	Savory - West	314 Acres	"4"	West Goforth Electric	24 Acres
"N"	Savory - Middle	386 Acres	"5"	Spring Lakes Trap	45 Acres
"O"	Savory - East	569 Acres	"6"	South Bio Creek Pasture	52 Acres
"P"	Goforth Upland	1480 Acres	"7"	Simpson Horse Pastures	63 Acres
"Q"	Hunziker Rangeland + Hunziker Pond	502 Acres 34 Acres	"8"	Simpson Pond	27 Acres
			"9"	Mtn Cement's Pasture	722 Acres



