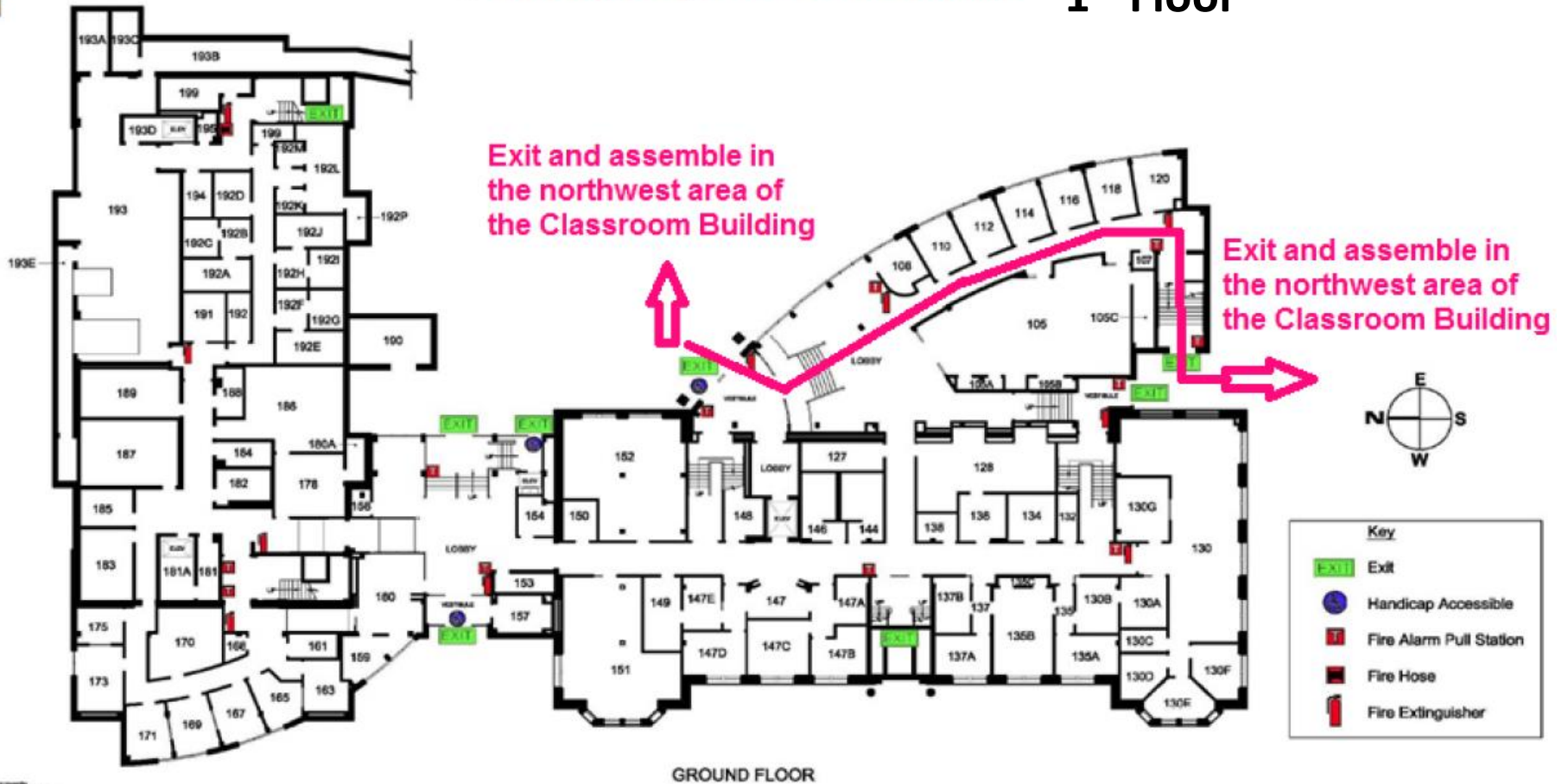




# Health Sciences Building Emergency Evacuation Map

## 1<sup>st</sup> Floor



Updated 7/14/08  
 For corrections or comments,  
 contact UW Road Safety Operations  
 (607) 796-2908 (307) 796-2907

### Evacuation Guidelines

- In case of fire or other emergency requiring evacuation, activate the nearest fire alarm pull station.
- Exit in a calm and orderly fashion. Once you have evacuated to a safe location, immediately call 911.
- Assist injured personnel, if time permits, and make sure all doors are closed and hazardous work operations are shut down as you exit.
- If you are in a multistory building, do not use the elevator.

### Safety Guidelines

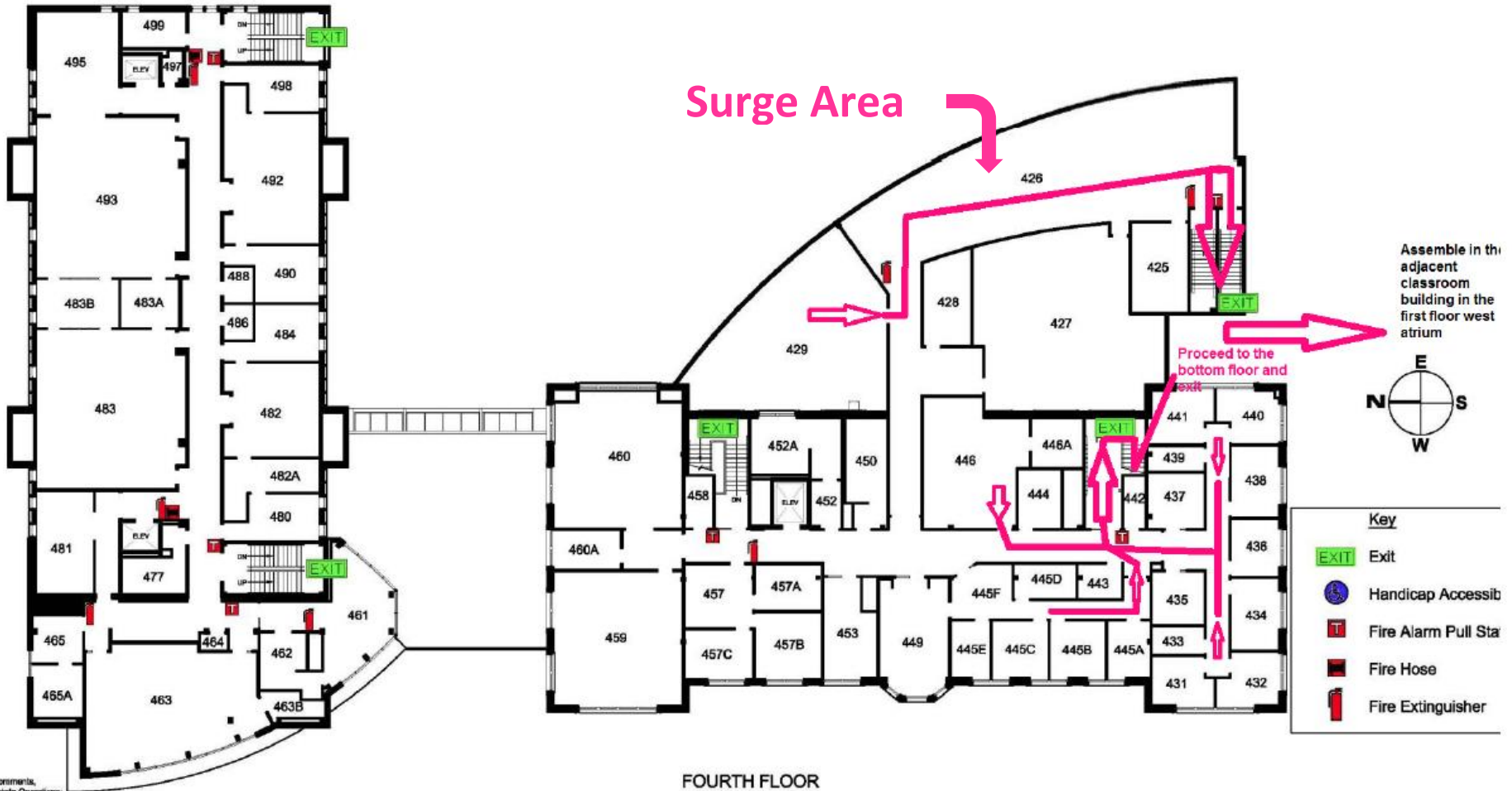
- Familiarize yourself with the location of exits, alarm pull stations, and fire extinguishers.
- Attempt to control a fire with a fire extinguisher only when the fire is small and you have been trained.
- Keep fire doors closed to prevent the spread of smoke and fire.

### Severe Weather

- In the event of a tornado, proceed to interior hallways and keep away from exterior doors and windows.



# Health Sciences Building Emergency Evacuation Map 4<sup>th</sup> Floor



Updated 7/14/08  
 For corrections or comments,  
 contact UW Risk/Estate Operations:  
 (307) 786-2936 (307) 786-2937

## Evacuation Guidelines

- In case of fire or other emergency requiring evacuation, activate the nearest fire alarm pull station.
- Exit in a calm and orderly fashion. Once you have evacuated to a safe location, immediately call 911.
- Assist injured personnel, if time permits, and make sure all doors are closed and hazardous work operations are shut down as you exit.
- If you are in a multistory building, do not use the elevator.

## Safety Guidelines

- Familiarize yourself with the location of exits, alarm pull stations, and fire extinguishers.
- Attempt to control a fire with a fire extinguisher only when the fire is small and you have been trained.
- Keep fire doors closed to prevent the spread of smoke and fire.

## Severe Weather

- In the event of a tornado, proceed to interior hallways and keep away from exterior doors and windows.